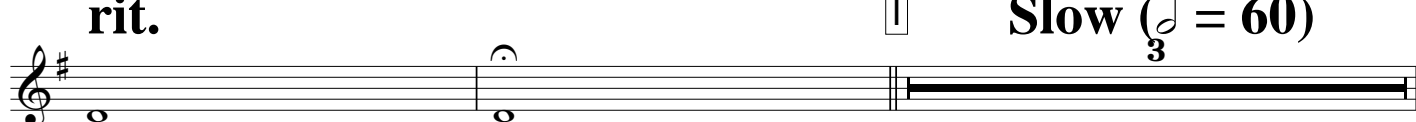
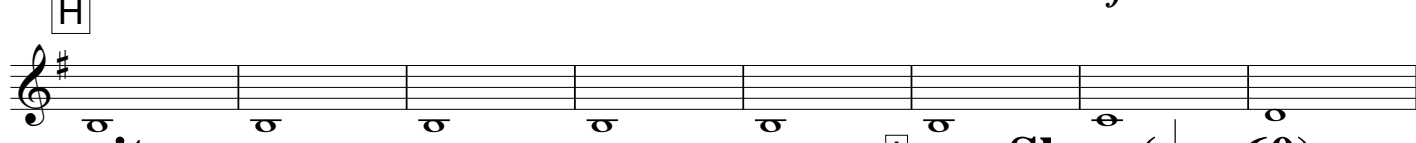
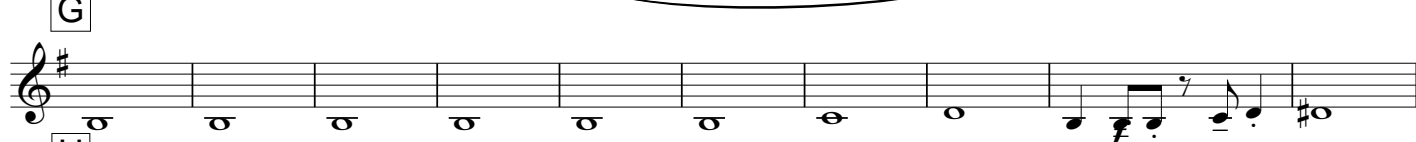
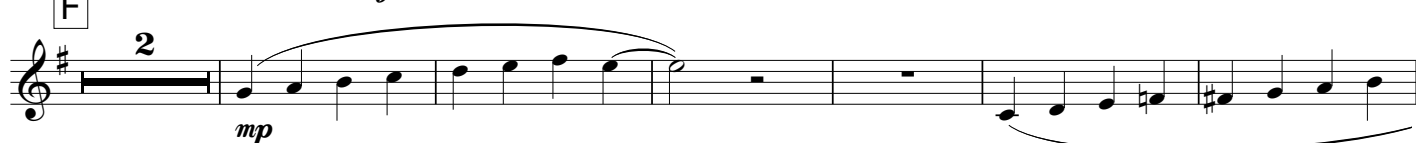
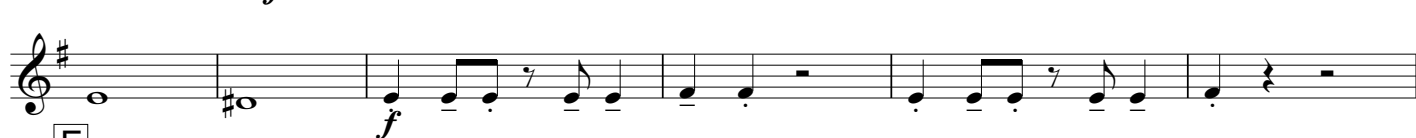
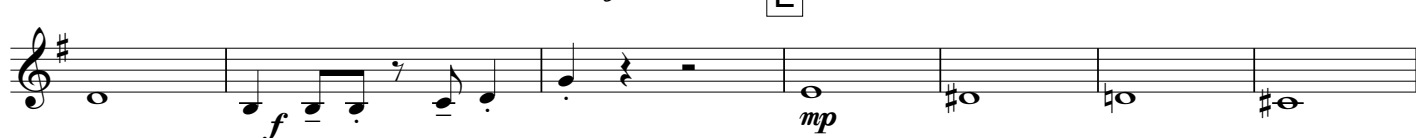
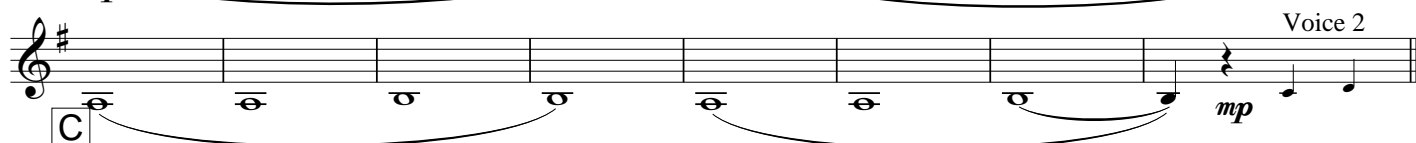
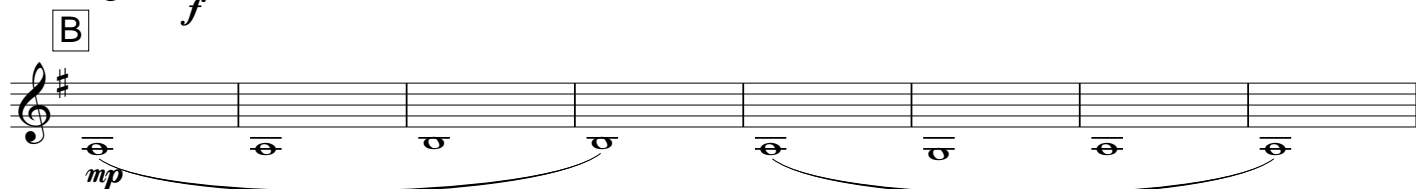
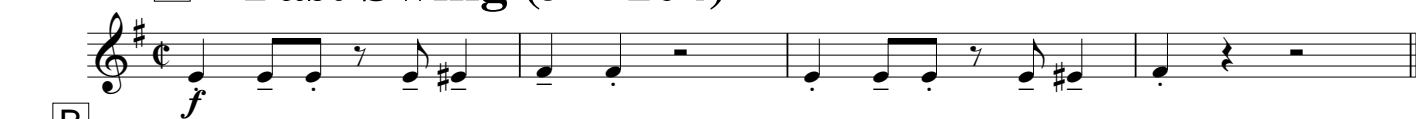


# EDERS KEER

Comp. Gé Reinders  
Arr. Peter Kleine Schaars

IEDERE KEER

## A Fast Swing ( $\text{♩} = 104$ )



rit.

## I Slow ( $\text{♩} = 60$ )

# JA Tempo (♩ = 104)

The image displays three staves of musical notation for a piece titled "JA Tempo" with a tempo of 104 beats per minute (♩ = 104). The music is written in treble clef with a key signature of one sharp (F#). The first staff begins with a mezzo-piano (*mp*) dynamic marking and contains a sequence of notes and rests. The second staff continues the melody with similar note values and rests. The third staff concludes the piece, featuring a final melodic phrase and a double bar line. The notation includes various note values, rests, and dynamic markings.